

Siemens HMI Did you know you can do this?

Kelly Anton | 10-24-2019

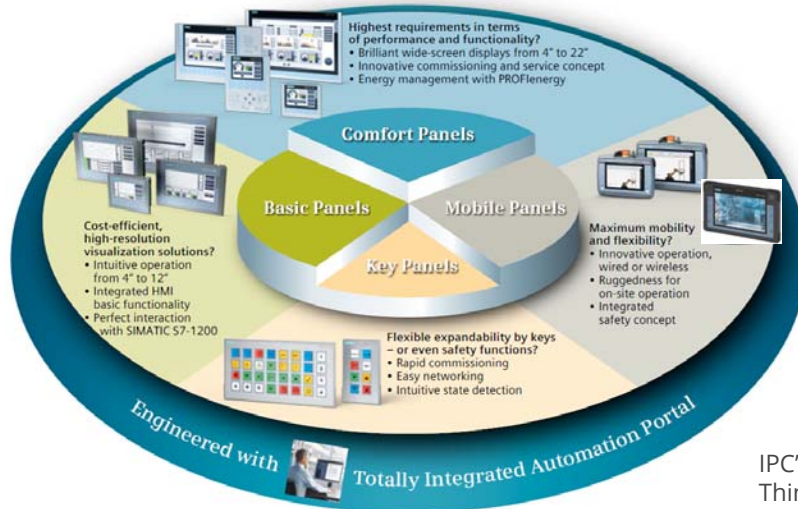
1

Agenda

- Brief HMI Family Overview
- Faceplate
- Advanced Global Editing
 - Change Object References
 - Change Object Color
- Design Styles/Sheets
 - Change Appearance
 - Set object defaults
- Cross Reference and Project Wide Search
- USB Stick Transfer (V14 or later)
- Live Demos

2

Siemens HMI Family Introduction



IPC's, Monitors and Thin Clients are available as well.

3

Siemens HMI Family Introduction

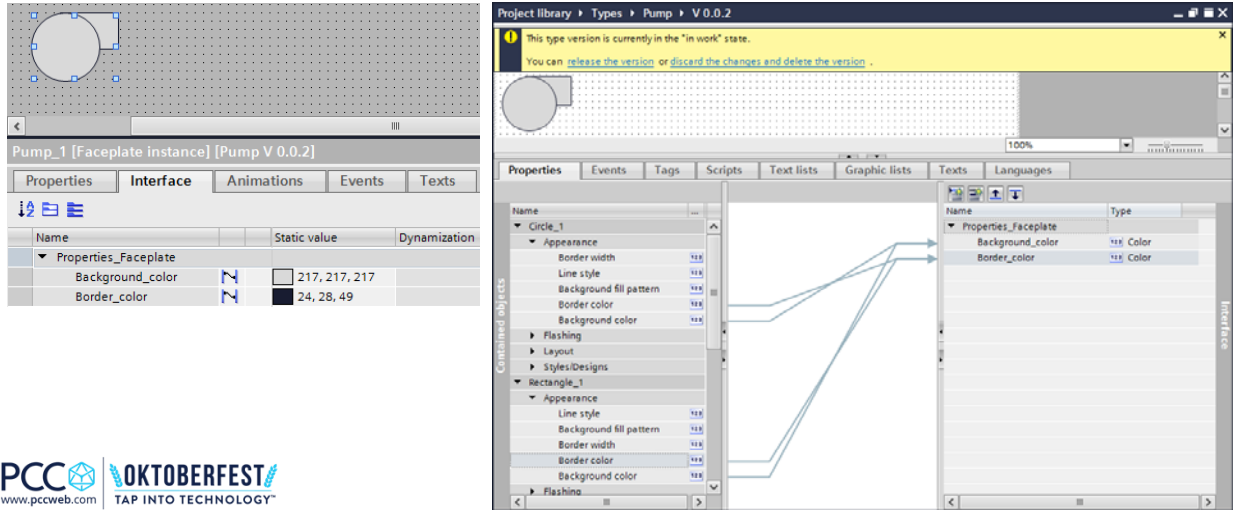
Same look and feel between all Editions of WinCC software in TIA Portal

Engineering Edition	WinCC Professional			
	WinCC Advanced			
	WinCC Comfort			
	WinCC Basic			
Devices	Basic Panels	Comfort Panels, Mobile Panels	Panel PCs	SCADA

4

Faceplates

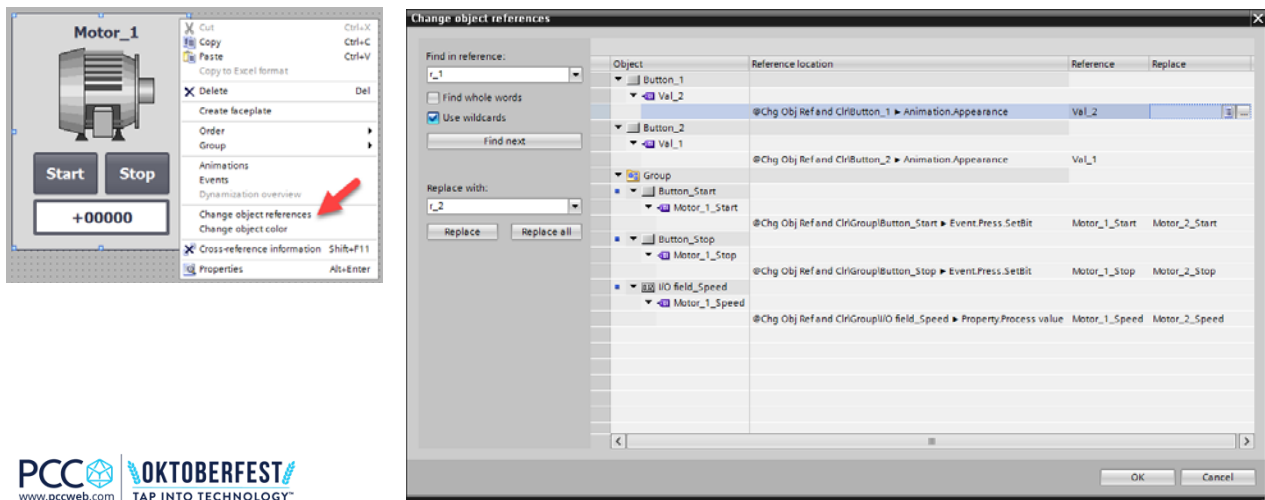
- Create your own objects with Properties and Events



5

Change Object References

- Select objects Right Click > Change object references



6

Change Object Color

- Select HMI, Screen or objects Right Click > Change object color

The 'Change object color' dialog box is shown with the following details:

- Select the color to be changed:** Color: 99, 101, 113; Tolerance: 0; Colors found: 9.
- Replace with:** 255, 0, 255 (Note: This color has already been used 2 times).
- Object Table:**

Object	Point of use	Property	Current color	Replace with
Permanent area				
Text field_1				
Date/time field_1				
Date/time field_2				
Global screen				
Slide-in screen top				
Slide-in screen left				
Slide-in screen bottom				
Slide-in screen right				
Template_1				
SB_ExitRuntime_53x53				
Template_Button_1		Background color gradient (fill pattern)	[A=255; R=99; G=101; B=113]	[A=255; R=255; G=0; B=255]
Template_Button_2		Background color gradient (fill pattern)	[A=255; R=99; G=101; B=113]	
Template_Button_3		Background color gradient (fill pattern)	[A=255; R=99; G=101; B=113]	
Template_Button_4		Background color gradient (fill pattern)	[A=255; R=99; G=101; B=113]	
Template_Button_5		Background color gradient (fill pattern)	[A=255; R=99; G=101; B=113]	

7

Design Styles

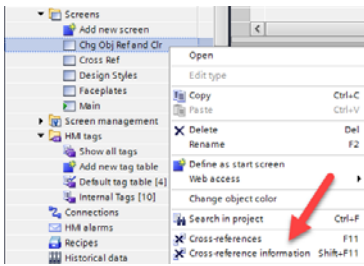
- Consistent look

The design style configuration is shown across several windows:

- Options:** 'Use device style/design' is selected under 'Basic object'.
- Runtime settings:** 'Style of the HMI device' is set to 'PCC Style V 0.0.1'.
- Properties:** 'Style/Designs' settings are visible, including 'Style item appearance: Button [Default]'.
- Style preview:** Shows a visual representation of the selected design style with various UI elements like buttons, text fields, and gauges.

8

Cross-references and Cross-reference information

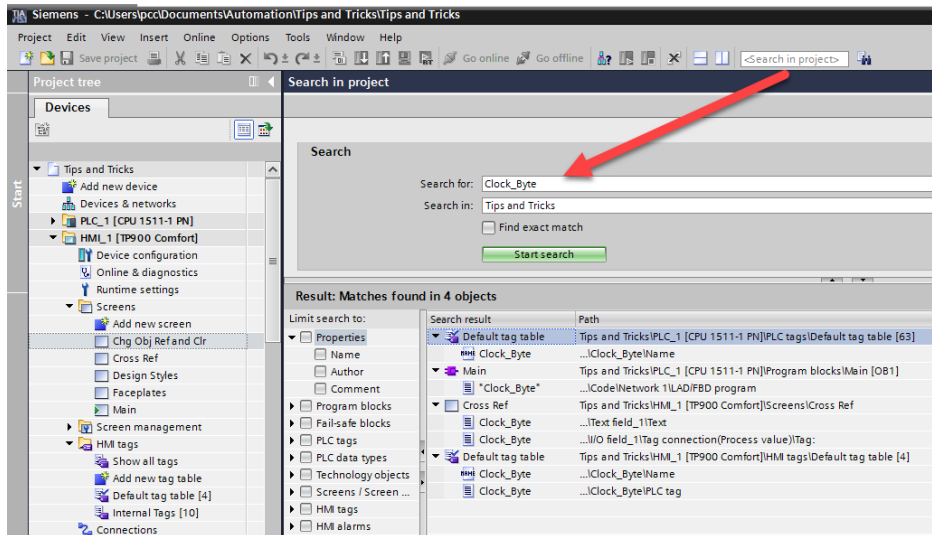


A screenshot of the 'Cross-reference information' dialog box. The 'Cross-references' tab is active, and the search criteria are set to 'Show objects with references'. The table below shows the following data:

Object	Reference location	Reference type	As	Access	Address	Type	Device	Path
Clock_Byte					PLC_1\Clock_Byte	HMI_Tag	HMI_1	HMI_1\HMI tags\Default tag table
Cross Ref						Screen	HMI_1	HMI_1\Screens
IIO field_1	@Cross Ref\IO field_1 ▶ Property/Process value	Used by				IO field	HMI_1	HMI_1\Connections
HMI_Connection_1	@Clock_Byte ▶ Property/Connection	Uses				Connection	HMI_1	HMI_1\Connections
1 s	@Clock_Byte ▶ Property/Acquisition cycle	Uses				Cycle	HMI_1	HMI_1\Cycles
Main	@Main ▶ NW1	Used by	Clock_Byte	Read only	%OB1	LAD-Organization...	PLC_1	PLC_1\Program blocks
Clock_Byte	@Clock_Byte ▶ Property/PLC tag	Uses			%MB100	Byte	PLC_1	PLC_1\PLC tags\Default tag table

9

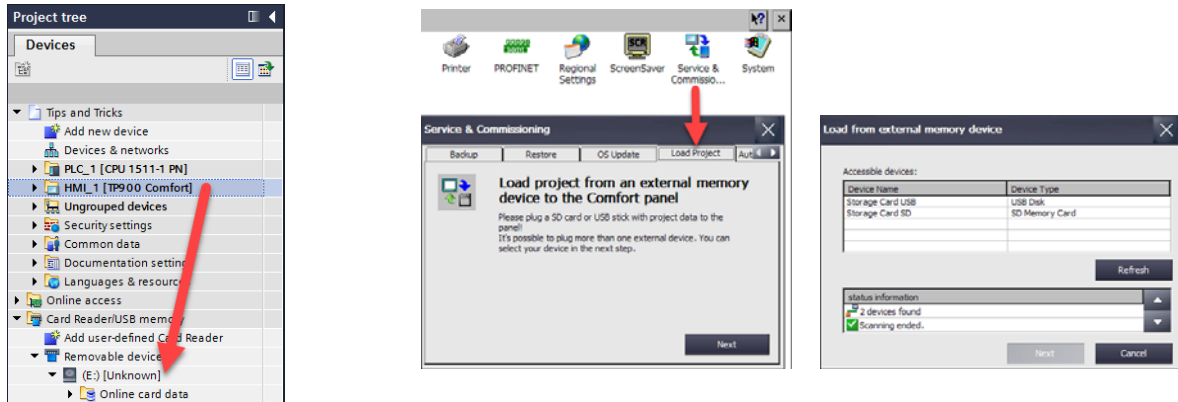
Search in project



10

USB Project Transfer

Plug USB stick into PC & Drag HMI from Project tree to USB stick.
Plug USB stick into HMI, Service & Commissioning > Load Project



11

Live Demos

- Create Faceplate
- Change Object References
- Change Object Color
- Design Styles/Sheets
- Cross Reference
- Project wide Search
- USB Stick Transfer (V14 or later)

12

PCC YouTube Videos

- Design Styles video
 - https://youtu.be/au2_AEsZ3XQ
- Creating a Faceplate video
 - <https://youtu.be/Kss0ZxrTzOY>