

Parker Factory Display

Production and Lean Visualization Systems



Visual Impact: Your Next Productivity Advantage

One of the best ways to cut the high cost of downtime and scrap, is to empower workers with real-time, situational awareness for faster response to downs and non-conforming conditions on the factory floor. That's why the new Parker Factory Display (PFD) visualization system pays for itself so quickly.

PFD offers unprecedented flexibility and impact for delivering critical messages to associates on the factory floor. Whether presenting Andon displays, lean metrics, production status, OEE data, safety policies or employee announcements, the Parker Factory Display is much more than a "scoreboard" that simply displays text.

Contact Information:

Parker Hannifin Corporation
Electromechanical Automation Division
 5500 Business Park Drive
 Rohnert Park, CA 94928

phone: 800.358.9070 / 707.584.7558

fax: 707.584.8029

email: emn_support@parker.com

www.parkermotion.com/PFD

Interval	Target / Total	Actual / Total	# of People	Comments
6:00 - 7:00 AM	25 / 25	26 / 26	2	
7:00 - 8:00 AM	25 / 50	19 / 45	2	
8:00 - 9:00 AM	25 / 75	20 / 65	2	
9:00 - 10:00 AM	25 / 100	22 / 87	2	Out of Parts
10:00 - 11:00 AM	25 / 125	27 / 114	2	
11:00 - 12:00 PM	25 / 150	26 / 140	2	
12:00 - 1:00 PM	25 / 175	24 / 164	2	
1:00 - 2:00 PM	25 / 200	28 / 192	2	Fault on Cell 1
Overtime	0 / 200	0 / 192	0	

PFD Features

Information Anywhere! - Move information around or even off the plant floor with integrated web publishing capabilities

- Intuitive development tools and templates allow easy screen customization and configuration
- Customer designed templates allow corporate-wide, standard metrics to be deployed faster and easier than any other technology
- Direct PLC connectivity automates data collection - over 40 drivers included at no charge
- HD image quality supports stunning graphical capabilities and rich media for high impact presentations

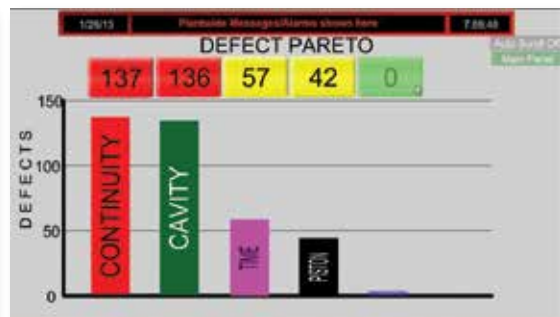
- A continuous improvement database can be distributed to multiple locations - even exported to common formats for further analysis
- Sophisticated security allows 6 different access levels including "view only" for remote users
- Offered in 32", 40", 46" and 55" widescreen sizes with 16.7 million colors as a full PFD or monitor only solution
- Controller only version now has two Ethernet ports to separate office and plant networks
- Thermal sensors and fans provide cooling in Industrial environments
- Power can be scheduled to match downtime - saving energy
- VESA mounting



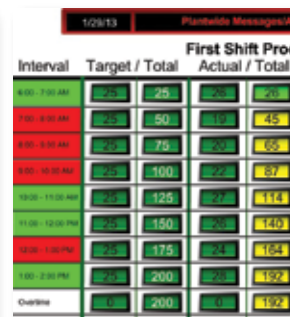
ENGINEERING YOUR SUCCESS.



OEE



Quality Pareto



Day-by-day

Templates included

The new Parker Factory Display offers unparalleled visual impact that enhances the message, while its distributed architecture easily integrates into your existing manufacturing and IT infrastructures.

PFDD Mon



Office Network



Ethernet 2



Laptop



Desktop PC



iPhone & iPad

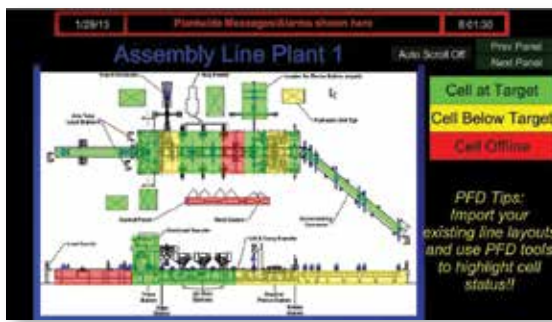


Android Tablet & Phone

PFDD Co



Hour



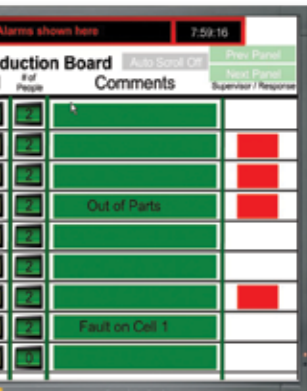
Plant Layout



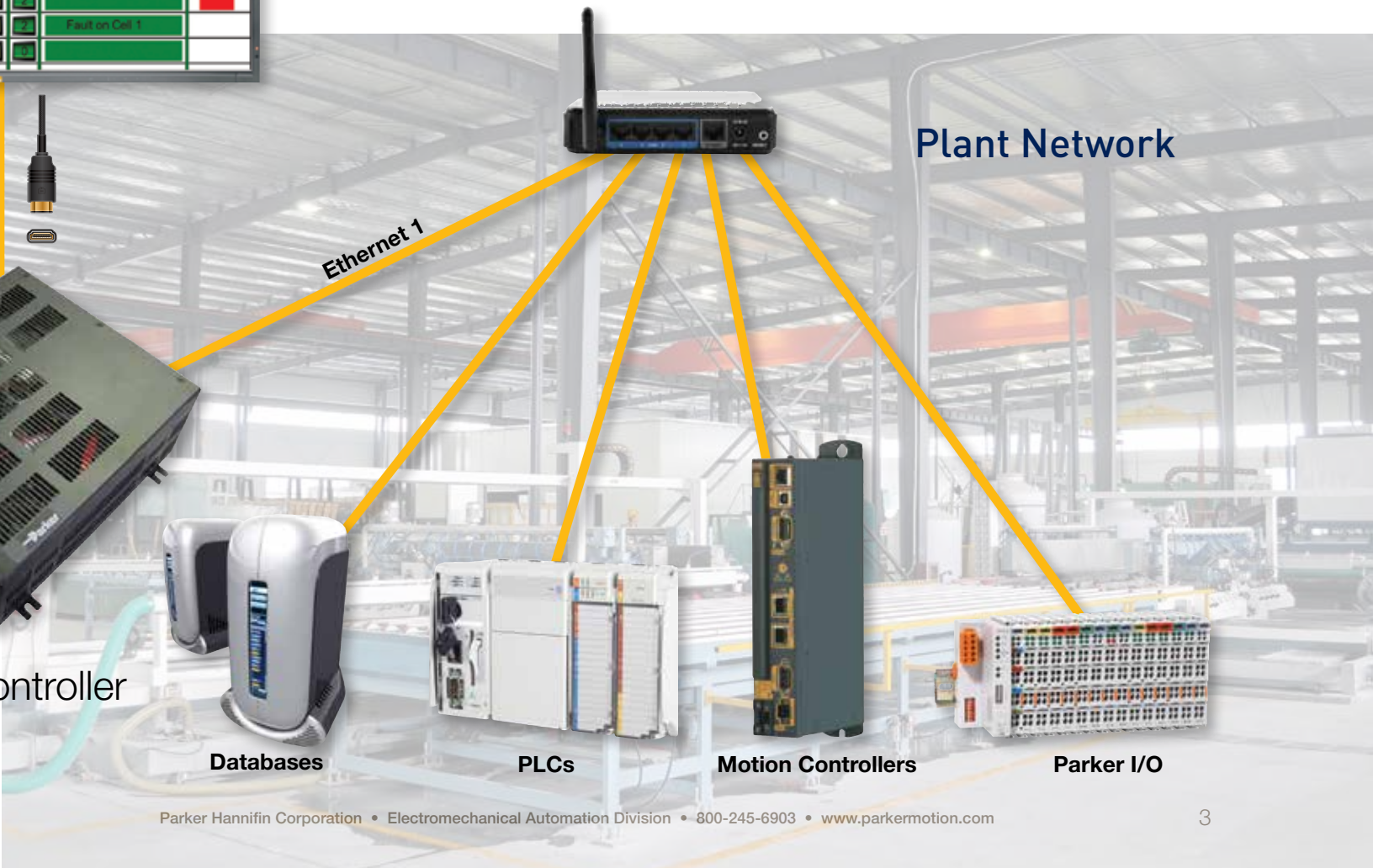
Safety

ed for quick setup

itor or TV



The newly designed controller for the PFD allows IT Professionals to utilize the best practice of separating the Office Network from the Plant Network. This network separation allows for better network security and the ability to optimize performance.



PFD Specifications

Display

Model	PFD32	PFD40	PFD46	PFD55
Size	32" Color TFT 31.5" (800 mm) Dia	40" Color TFT 40.0" (1016 mm) Dia	46" Color TFT 46.0" (1168 mm) Dia	55" Color TFT 54.6" (1388 mm) Dia
Resolution (Native)	1366 x 768	1920 x 1080	1920 x 1080	1920 x 1080
Brightness	450 cd/m2 (max)	650 cd/m2 (max)	650 cd/m2 (max)	700 cd/m2 (max)
Contrast Ratio	3000:1	3000:1	3500:1	4000:1
Viewing Angle	89° (typical)	89° (typical)	89° (typical)	89° (typical)
VESA Mounting	200 mm	300 mm	300 mm	400 mm

Controller Only

Operating System	Windows XP Professional	
Processor	CPU: 2.0 GHz Celeron M550	
Chipset	Intel GME965/ICH8M Chipset; 533 MHz/667 MHz FSB; Integrated Intel Graphics	
Memory	System: 2 GB (Std) 4 GB (Max) (2) 200 Pin DDRII SODIMM Slots	
Storage	80 GB SSD (minimum) hard drive	
Ports	Keyboard	(1) PS/2 with over current protection
	Mouse	(1) PS/2 with over current protection
	USB	(4) 2.0/1.1 ports Type-A with over current protection
	Serial	(2) RS232 9-PinD-sub and (1) RS232/422/485 selectable 9-pin D-sub
	Ethernet	(2) 1000Base-T w/RJ45
	External Video	(1) Analog 15-Pin D-sub connector (max resolution 2048 x 1536) (1) DVI-I Digital Output
	Audio	(1) Amplified Output (1) Line Input (1) Microphone, AC97, HD5.1 Audio Output
Temperature	0 – 50°C	
Rel. Humidity	5-95%	
Power Requirement	100 – 120 VAC or 220 – 240 VAC @ 50/60 Hz	
Dimensions	Controller Only: 10.9" H x 11.3" W x 4.3" D (277 mm H x 287 mm W x 109 mm D)	
Weight	11.3 lbs (5.1 kg)	
Agency Approval	EC Generic EN61000-6-4 / EN55011 EC Generic EN61000-6-2 EN61000-3-2 & 3 EN61000-4- 2,3,4,5,6,8 & 11 EN60950-1 UL508 CE RoHS	

*Actual storage volumes may be higher.



ENGINEERING YOUR SUCCESS.