

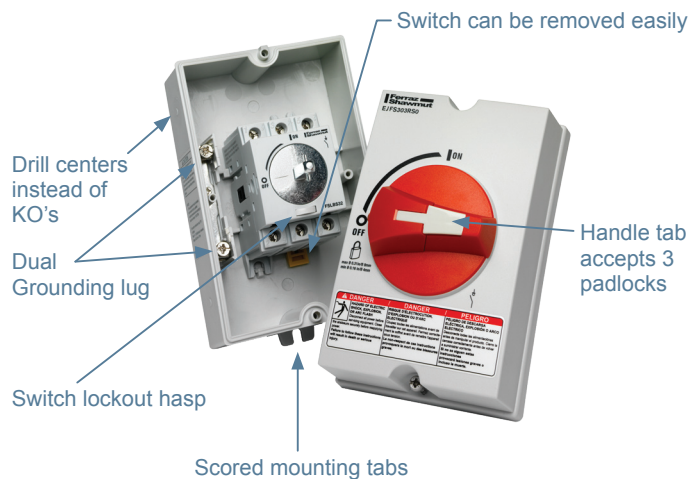
EJFS Enclosed Disconnect Switch

EJFS303RS0 (30A) and EJFS603RS0 (60A)

Mersen introduces two new NEMA 4X enclosed switches!



EJFS303RS0

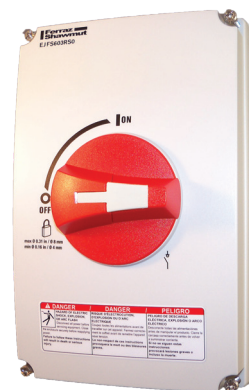


EJFS303RS0 (30A) and EJFS603RS0 (60A)

- A rugged design at a competitive price.
- Heavy-duty polycarbonate NEMA 4X enclosure
- Complements our existing line of enclosed disconnect switches
- UL listed, File E196672, Enclosed Manual Motor Controller
- cUL for CSA standard 22.2 #14; RoHS compliant

Features

- The compact design is 30% smaller than comparable units.
- Designed with minimal indentations to facilitate easier cleaning. Great for the food service industry!
- Drill points, vs. knockouts, allow user to choose the hole size
- Integral handle can be locked-out with 3 padlocks
- Metal shaft is designed for years of service
- Accommodates 2 pairs of auxiliary contacts – Part #'s FSACNONC or FSACNONO, both UL listed for field installation
- Switch accepts 2 wires per terminal
- Dual Ground lug is standard
- Switch can easily be removed for increased access to the terminals



EJFS603RS0

Approvals

UL Listed, File E196672
cUL per CSA 22.2 #4
IEC 60947-3



USA T 978 462 6662 F 978 462 0181 info.nby@mersen.com
CANADA T 416 252 9371 F 416 252 6572 sales.tor@mersen.com

us-ferrazshawmut.mersen.com

FERRAZ SHAWMUT IS NOW MERSEN



EJFS Enclosed Switches

Technical characteristics

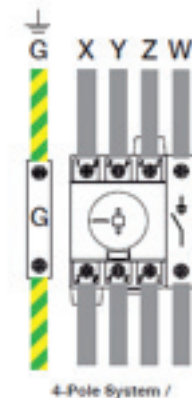
		EJFS303RS0	EJFS603RS0
Ampere Rating			
		30A	60A
Short circuit rating at 600 VAC (kA)			
		10kA/65kA	65kA/50kA
Fuse type			
		J	J
Max. fuse rating (A)			
		60/30	60/100
Max. horsepower rating			
208 VAC			
		7.5 / 24A	15 / 46A
220-240 VAC			
		7.5 / 22A	20 / 54A
440-480 VAC			
		20 / 27A	40 / 52A
600 VAC			
		25 / 27A	40 / 41A
Connection			
Solid	1 wire	#14 - #10	#14 - #10
	2 wires	2x #12	2x #12
Stranded	1 wire	#14 - #4	#14 - #1
	2 wires	2x (#14 - #12)	2x (#10 - #6)
Torque		26.5 lb-in / 3 Nm	31.1 lb-in / 3.5 Nm
Auxiliary contacts			
Electrical characteristic		A300	A300

Auxiliary Contacts

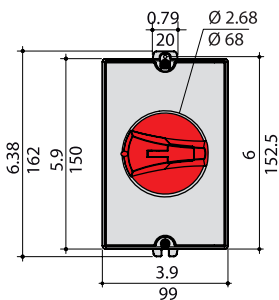
Each module has two sets of contacts. One set opens with the switch, the other is pre-break. They are UL listed for field installation.

FSACNONC – Normally Open/Normally closed

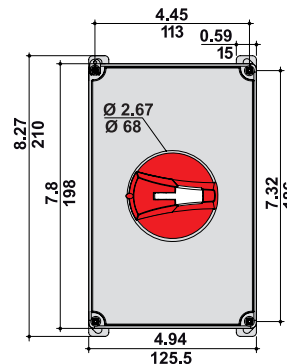
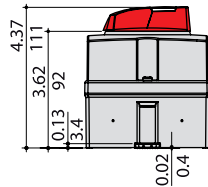
FSACNONO – Both Normally Open



Dimensions (in/mm)



EJFS303RS0



EJFS603RS0

